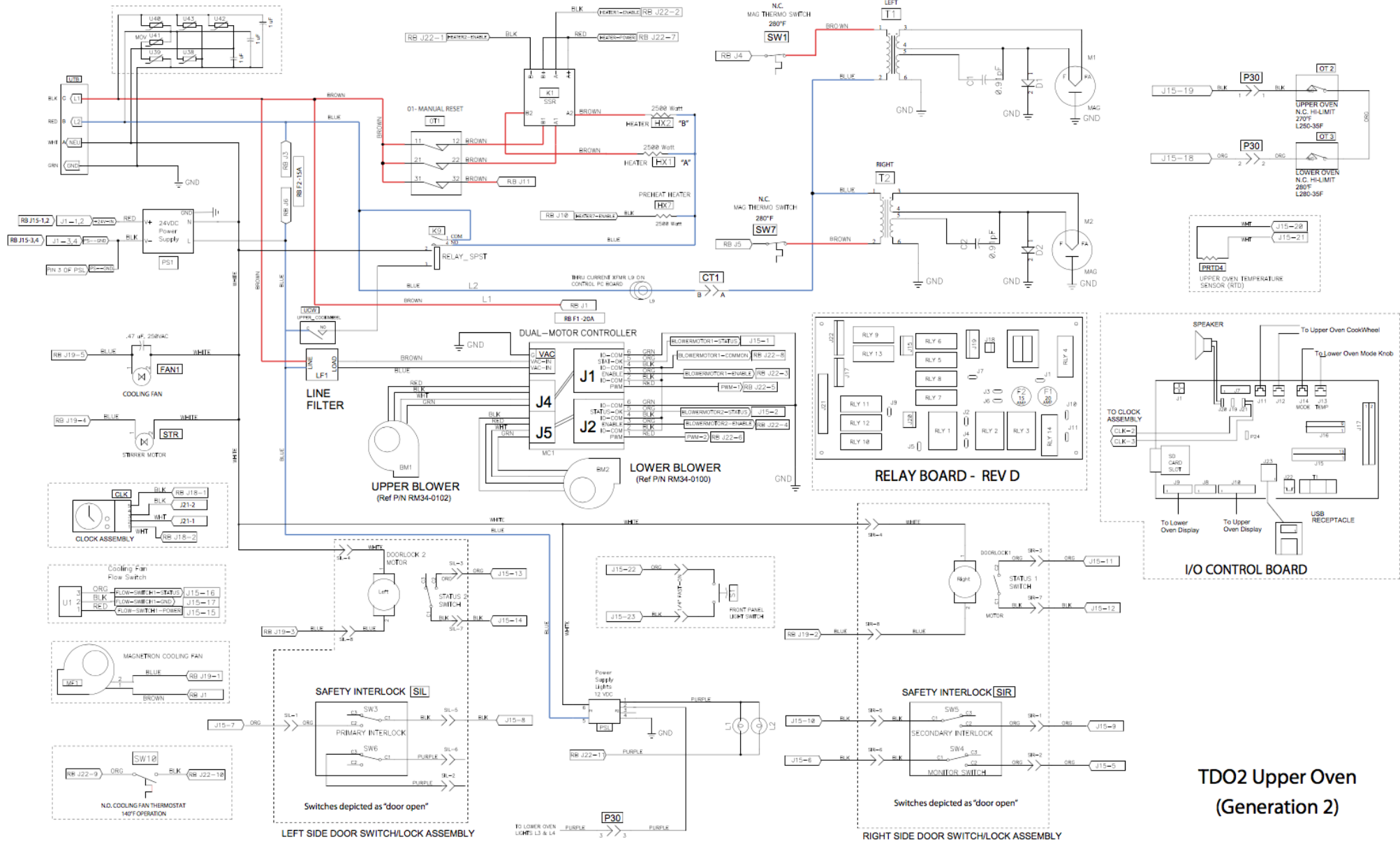


Acme Electric Oven Troubleshooting Problem

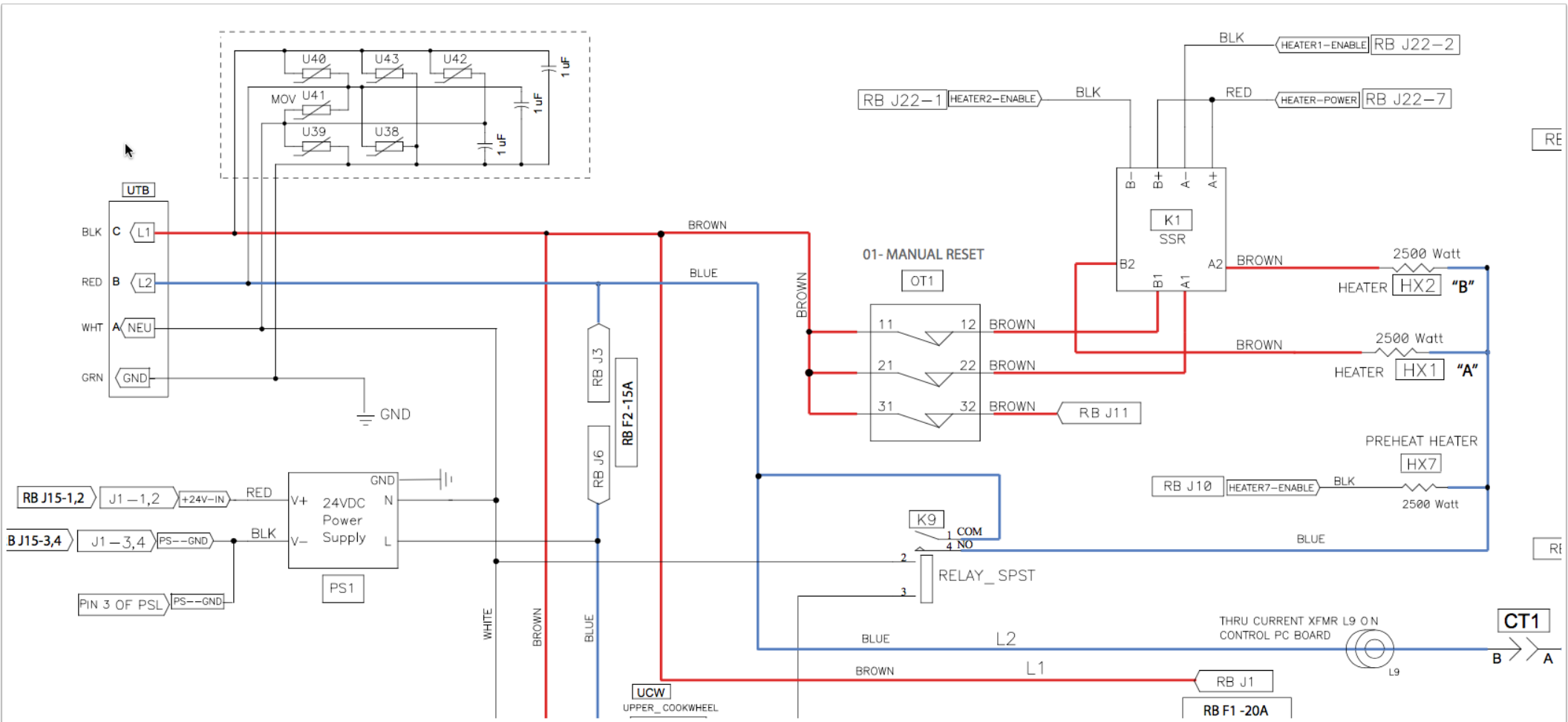
Service Call Request

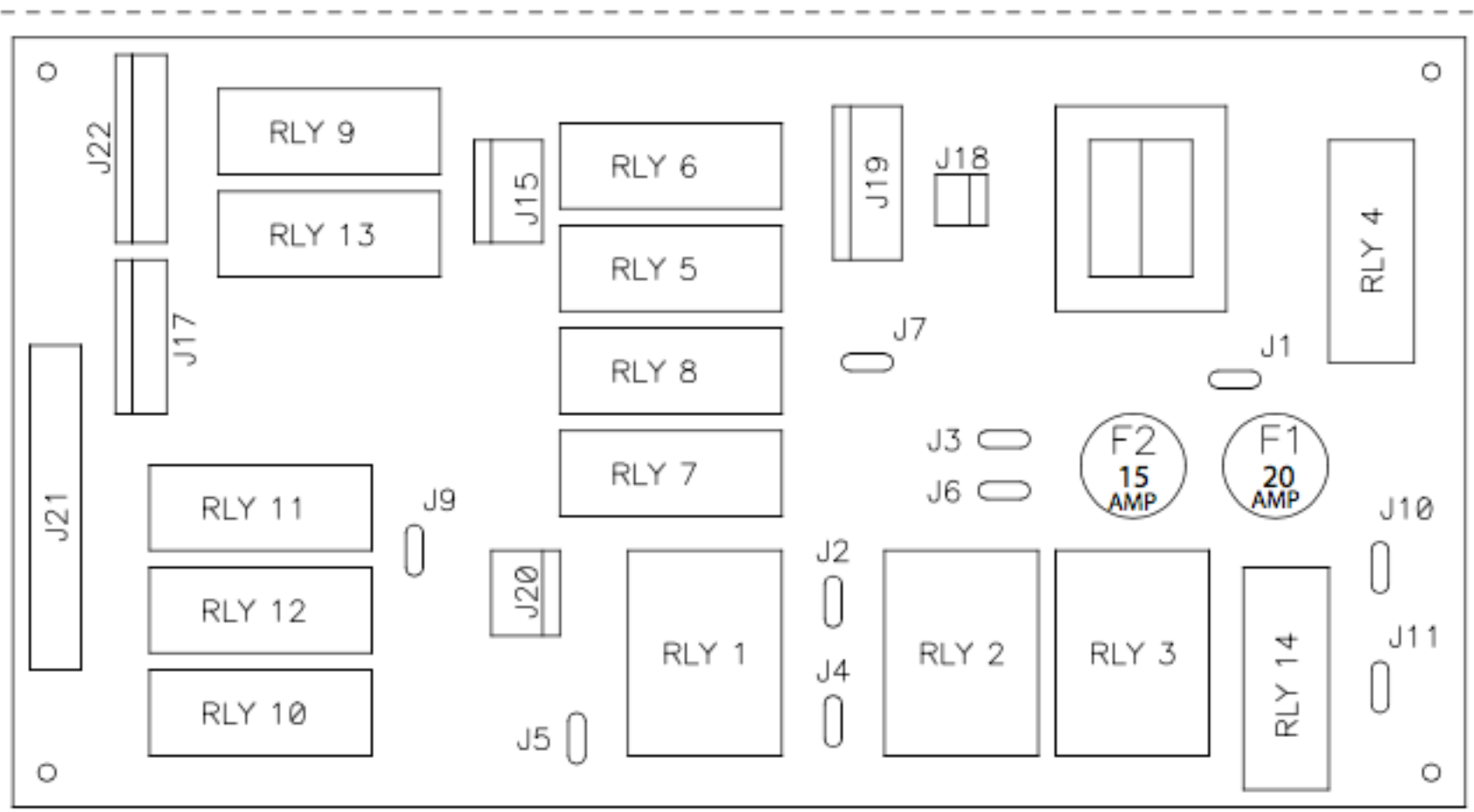
Double wall oven, upper oven won't heat at all. Lower oven works fine. Customer's husband is a famous brain surgeon and says the problem started sometime after he ran the convection speed cook. Although the convection fan still works, it is obviously preventing the oven from heating up.

1. Problem Statement:
2. Schematic Review
3. What's the LOI?
4. LOI Circuit Analysis
5. Troubleshooting Hypothesis:
6. Electrical Measurements and Expected Readings:
7. EEPs
8. Measurement Results:
9. Comparison of Measurements with Expected Readings:
10. Indicated Repair



**TD02 Upper Oven
(Generation 2)**





RELAY BOARD - REV D

Testing Relay 14 (Pre-Heat) Operation (Gen 2)

1. Turn the Cook Wheel to Bake to begin the preheat cycle.
2. Apply the amprobe to the wire on terminal RBJ11 and confirm a measurement of approximately 9 amps is present. If 0 amps is present, ensure the pre-heat element is not faulty by checking the L1 voltage at terminal RBJ-10 to ground and RBJ-11 to ground (of the relay board). If voltage is present, continue.

NOTE: L1 voltage enters the relay board from the high limit switch at terminal RBJ-10 and leaves through RBJ-11.